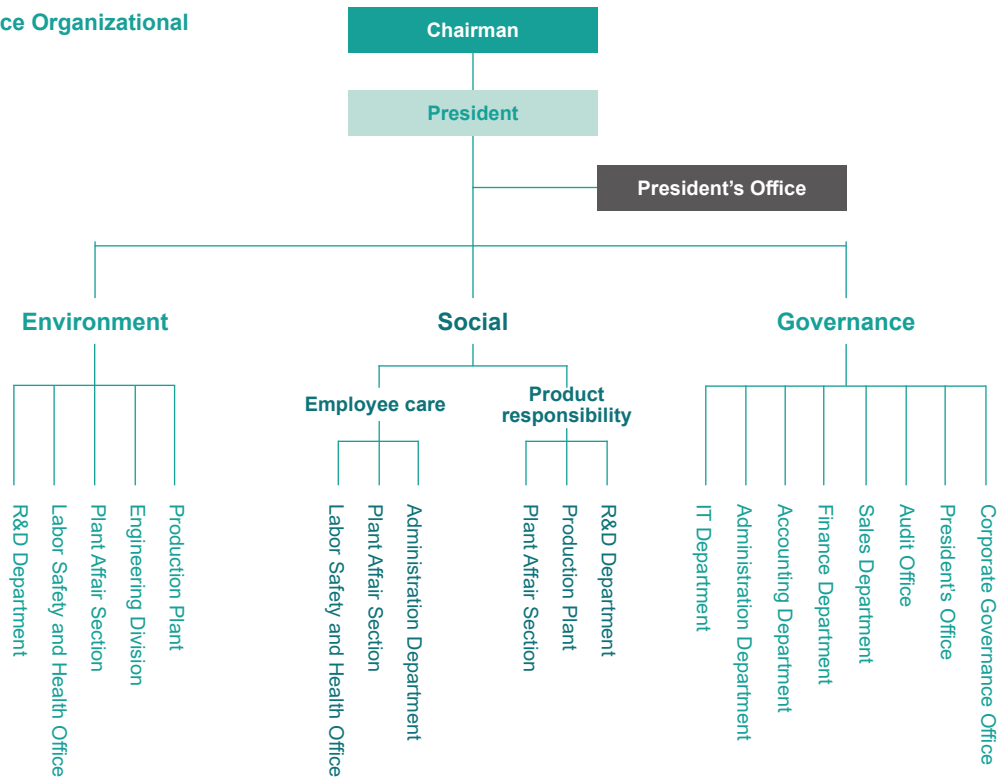


2.1 ESG Operation and Implementation

To maintain good corporate governance, economic performance, development of a sustainable environment, protection of social welfare, and enhancement in the disclosure of corporate information, Zig Sheng has established a sustainability governance organization to set annual targets, track the effectiveness of their implementation, and report to the Board of Directors once a year.

Sustainability Governance Organizational Structure



Internal and External Implementation of ESG

<p>Fulfilling responsibilities</p>	<p>Preventing hazards</p>
<p>Society</p> <ul style="list-style-type: none"> - Protecting workers' rights and respecting human rights - Providing appropriate work opportunities for people with physical or mental disabilities - Conducting business with ethics and opposing improper profits - Participating in social welfare activities - Complying with business ethics - Establishing a reporting system 	<p>Society</p> <ul style="list-style-type: none"> - Occupational health and safety - Complying with regulatory requirements - Contractor management - Promotion of Health
<p>Corporate Sustainability</p>	
<p>Corporate governance</p> <ul style="list-style-type: none"> - Maintaining good corporate performance - Enhancing the disclosure of corporate information - Continuous innovation and growth - Pursuing reasonable profits - Maintaining good relationships with customers and suppliers 	<p>Environmental protection</p> <ul style="list-style-type: none"> - Pollution control - Effective reuse of resources - Complying with regulatory requirements - Continuous development of environmentally-friendly products - Developing renewable energy - Carbon footprint inventory - Aim for net-zero emissions
<p>Sustainable development</p>	<p>Reducing pollution</p>